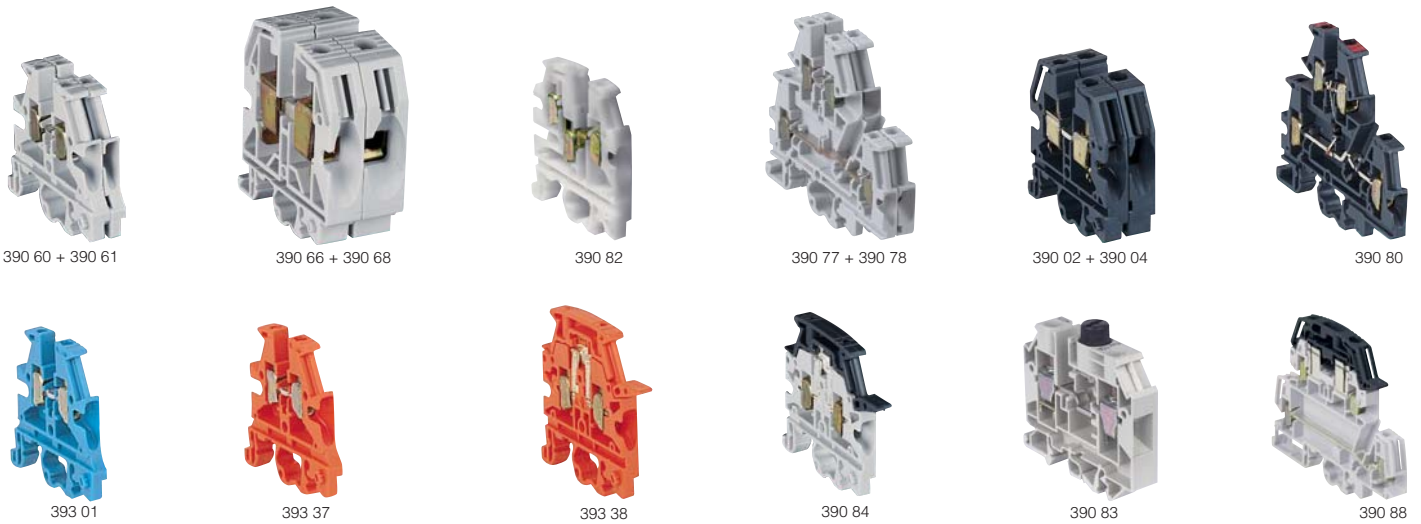


# Viking™ 3 terminal blocks

with screw connection



For asymmetrical rail EN 60715 □, symmetrical rail 15 mm depth and symmetrical rail 7.5 mm and 15 mm depth EN 60715 ⊥  
 Insulating material: polyamide – 30 to +100 °C (110 °C for V.O.- UL94)

Pack	Cat.Nos	Standard			
		<b>1 connection - 1 entry - 1 outlet</b>			
		Nominal (mm <sup>2</sup> )	Capacity (mm <sup>2</sup> )		Pitch (mm)
			Rigid cable	Flexible cable	
60	390 60	2.5	0.25 to 4	0.25 to 2.5	5
50	390 61	4	0.25 to 6	0.25 to 4	6
40	390 62	6	0.5 to 10	0.25 to 6	8
30	390 64	10	1.5 to 16	2.5 to 10	10
20	390 66	16	1.5 to 25	4 to 16	12
20	390 68	35	2.5 to 50	4 to 35	15
10	390 70	70	25 to 95	16 to 70	22
		<b>1 connection - 1 entry - 2 outlets</b>			
50	390 82	4	0.25 to 6	0.25 to 4	6
		<b>2 connections with 2 levels</b>			
60	390 77	2.5	0.25 to 4	0.25 to 2.5	5
60	390 78	4	0.25 to 6	0.25 to 4	6
		<b>V.O. - UL 94</b>			
		For emergency circuits in public buildings			
		<b>1 connection</b>			
		Nominal (mm <sup>2</sup> )	Capacity (mm <sup>2</sup> )		Pitch (mm)
			Rigid cable	Flexible cable	
60	390 00	2.5	0.25 to 4	0.25 to 2.5	5
50	390 01	4	0.25 to 6	0.25 to 4	6
40	390 02	6	0.5 to 10	0.25 to 6	8
30	390 04	10	1.5 to 16	2.5 to 10	10
20	390 06	16	1.5 to 25	4 to 16	12
20	390 08	35	2.5 to 50	4 to 35	15
		<b>2 connections with 2 levels</b>			
		<b>Standard with link</b>			
		1 entry - 3 outlets at same potential			
		Nominal (mm <sup>2</sup> )	Capacity (mm <sup>2</sup> )		Pitch (mm)
			Rigid cable	Flexible cable	
60	390 76	4	0.25 to 6	0.25 to 4	6
		<b>Diode-carrier</b>			
		Diode characteristics for Cat.No 390 80:			
		• 1 N 4007 type 1 A			
		• Direct current = 1.15 A			
		• Peak inverse voltage 1000 V			
		• Inverse current 5 µA at 25 °C			
60	390 80	4	0.25 to 6	0.25 to 4	6
		<b>Voltage presence</b>			
		With led 12/24 V, DC = and AC ~			
60	390 81	4	0.25 to 4	0.25 to 4	6

Pack	Cat.Nos	For neutral conductor (blue)			
		<b>1 connection</b>			
		Nominal (mm <sup>2</sup> )	Capacity (mm <sup>2</sup> )		Pitch (mm)
			Rigid cable	Flexible cable	
60	393 00	2.5	0.25 to 4	0.25 to 2.5	5
50	393 01	4	0.25 to 6	0.25 to 4	6
40	393 02	6	0.5 to 10	0.25 to 6	8
30	393 03	10	1.5 to 16	2.5 to 10	10
20	393 04	16	1.5 to 25	4 to 16	12
20	393 05	35	2.5 to 50	4 to 35	15
		<b>2 connections on 2 levels</b>			
60	393 07	4	0.25 to 6	0.25 to 4	6
		<b>For circuit (orange) not broken by the general isolating device</b>			
		<b>1 connection</b>			
		Nominal (mm <sup>2</sup> )	Capacity (mm <sup>2</sup> )		Pitch (mm)
			Rigid cable	Flexible cable	
60	393 37	2.5	0.25 to 4	0.25 to 2.5	5
50	393 39	4	0.25 to 6	0.25 to 4	6
		<b>1 connection isolating</b>			
10	393 38	4	0.25 to 6	0.25 to 4	6
		<b>1 connection disconnect 1 level</b>			
		Nominal (mm <sup>2</sup> )	Capacity (mm <sup>2</sup> )		Pitch (mm)
		Blade type	Rigid cable	Flexible cable	
10	390 84	4	0.25 to 6	0.25 to 4	6
		Neutral equipped			
20	390 85	4	0.25 to 6	0.25 to 4	8
		For cartridge 5 x 20 and 5 x 25 with grip			
20	390 86	4	0.25 to 6	0.25 to 4	8
		With fusion indicator light (neon 230 V~)			
20	390 87	4	0.25 to 6	0.25 to 4	8
		For cartridge 5 x 20 with screwed plug			
20	390 83	10	0.25 to 16	0.25 to 10	12
		For cartridge 6.3 x 32 with screwed plug			
20	390 89	10	1 to 10	1 to 16	12
		<b>2 connections with 2 levels</b>			
		Isolating; top level			
		For cartridge 5 x 20 and 5 x 25			
		Nominal (mm <sup>2</sup> )	Capacity (mm <sup>2</sup> )		Pitch (mm)
			Rigid cable	Flexible cable	
20	390 88	4	0.25 to 6	0.25 to 4	8

## Viking™ 3 terminal blocks with screw connection



393 35/31/29/33



390 51



390 52



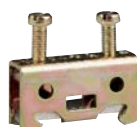
393 61 on rail



393 74



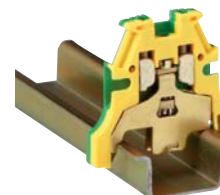
393 73



393 96



393 82



393 71 on rail

For asymmetrical rail , EN 607 15 symmetrical rail 15 mm depth and symmetrical 7.5 and 15 mm depth EN 60715 . (Reference number 390 51/52 and 393 73/96 on symmetrical rail only and 393 74/76/78 for symmetrical rail depth 15 mm only)  
Insulating material: polyamide – 30 to +100 °C, green-yellow for protection conductors  
Self extinguishing 960 °C as per IEC EN 606 95-2-11

Pack	Cat.Nos	For specific circuits			
		<b>1 connection</b>			
		For identifying circuits for emergency or fire, DC, protected by UPS, etc.			
		Nominal (mm <sup>2</sup> )	Capacity (mm <sup>2</sup> )		Pitch (mm)
			Rigid cable	Flexible cable	
60	393 29	2.5	0.25 to 4	0.25 to 2.5	5
60	393 31	Red			
60	393 33	White			
60	393 35	Brown			
60	393 35	Purple			
50	393 30	4	0.25 to 6	0.25 to 4	6
50	393 32	Red			
50	393 32	White			
50	393 34	Brown			
50	393 36	Purple			
		<b>For actuators and sensors</b>			
		For connecting sensors and there power supply with shunt Cat. No. 394 22/23/26			
		<b>Power supply / sensor unit</b>			
		3 levels of single junctions. For power supplying combs of actuator blocks			
		Nominal (mm <sup>2</sup> )	Capacity (mm <sup>2</sup> )		Pitch (mm)
			Rigid cable	Flexible cable	
50	390 51	2.5	0.25 to 4	0.25 to 2.5	5
		<b>Actuator / power supply unit</b>			
		For connecting actuators with there power supply with shunt Cat. No. 394 22/23			
		Nominal (mm <sup>2</sup> )	Capacity (mm <sup>2</sup> )		Pitch (mm)
			Rigid cable	Flexible cable	
50	390 52	2.5	0.25 to 2.5	0.25 to 2.5	5

Pack	Cat.Nos	Terminals for protection conductor with metal base				
		The metal foot on the terminal for protection conductor ensures the electrical and mechanical connection with the rail, allowing the rail to be used as an equipotential contact. Connection, repartition of protection conductors achieved according to the standards IEC 60439-1 and EN 60204				
		<b>1connection - 1 level</b>				
		Nominal (mm <sup>2</sup> )	Capacity (mm <sup>2</sup> )		Pitch (mm)	
			Rigid cable	Flexible cable		
20	393 70	2.5	0.25 to 4	0.25 to 2.5	5	
25	393 71	4	0.25 to 6	0.25 to 4	6	
20	393 72	6	0.5 to 10	0.25 to 6	8	
10	393 74 <sup>(1)</sup>	10	1.5 to 16	2.50 to 10	10	
10	393 76 <sup>(1)</sup>	16	1.5 to 25	4 to 16	12	
10	393 78 <sup>(1)</sup>	35	2.5 to 50	4 to 35	15	
		<b>2connections on 2 levels</b>				
20	393 73	4	0.25 to 6	0.25 to 4	6	
		<b>Bare terminal</b>				
10	393 96	35	2.5 to 50	4 to 35	15	
		<b>Terminals for protection conductor with plastic base</b>				
		Terminal for protection conductor without the use of rail as an equipotential contact, allows the connection of protection conductors in insulating conditions applicable for class II according to EN 60204				
		Nominal (mm <sup>2</sup> )	Capacity (mm <sup>2</sup> )		Pitch (mm)	
			Rigid cable	Flexible cable		
50	393 81	4	0.25 to 6	0.25 to 4	6	
40	393 82	6	0.5 to 10	0.25 to 6	8	
		<b>Terminals with 3 levels</b>				
		3 single connections with 3 levels and metal foot, can be used as PN $\frac{1}{3}$ (phase, neutral, Earth)				
50	390 52	2.5	0.25 to 2.5	0.25 to 2.5	5	

(1) For symmetrical rail 15 mm depth only